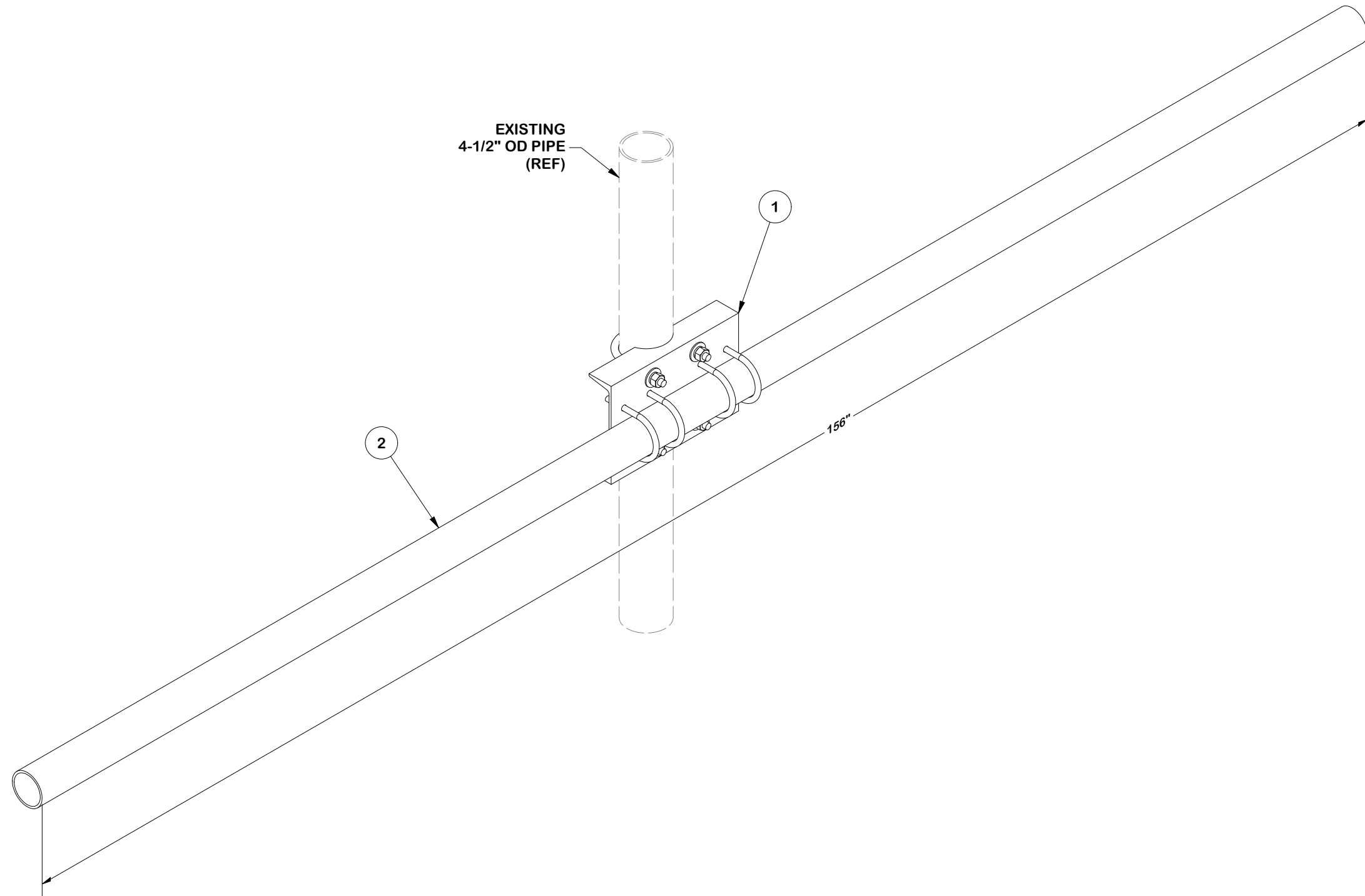

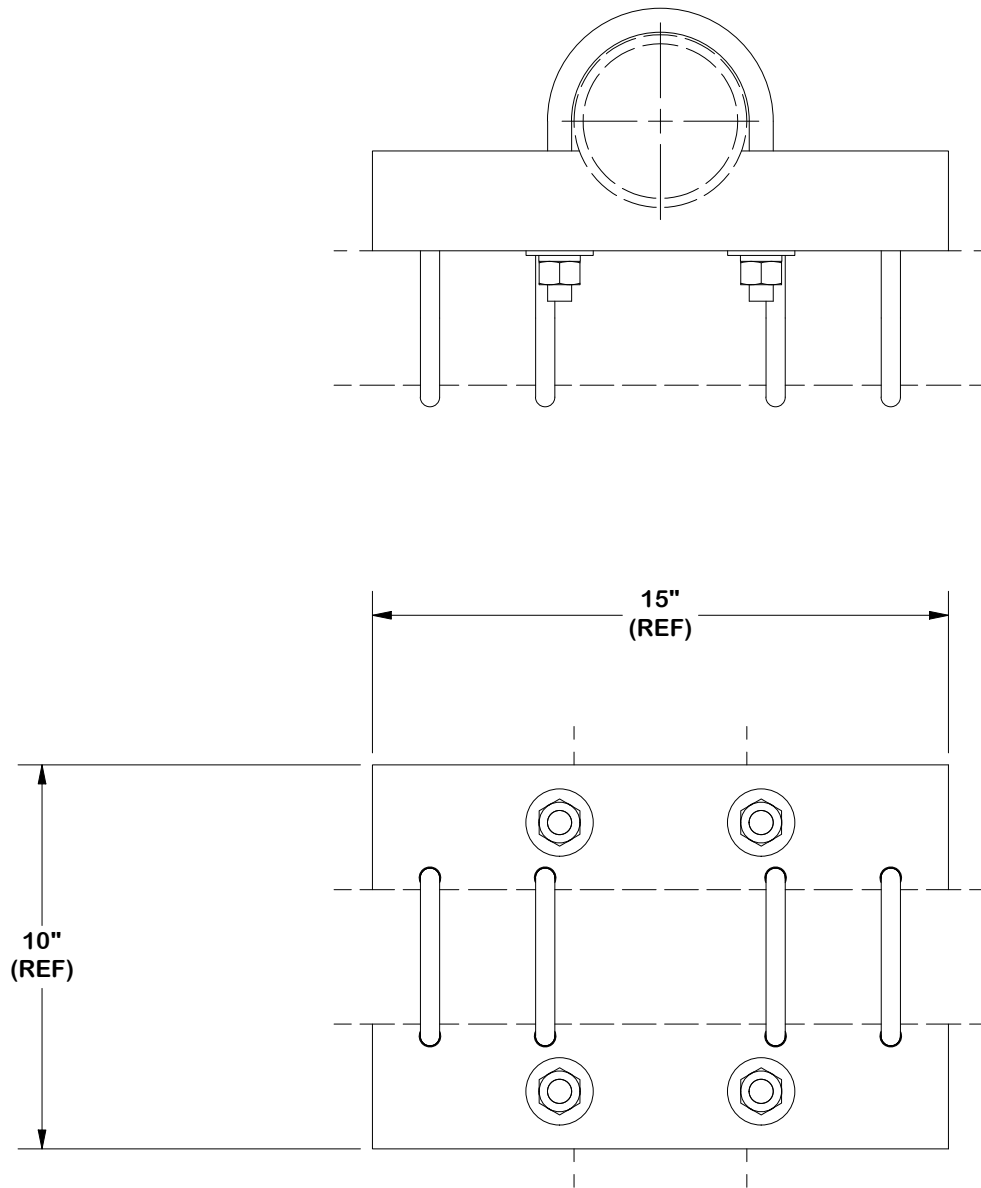


PARTS LIST							LENGTH	UNIT WT.	NET WT.
1	1	SP216	P-SP216	LARGE PIPE SUPPORT CROSS PLATE				30.46	30.46
2	1	P3156		3-1/2" X 156" (3" SCH 40) GALVANIZED PIPE (A53 GR.B FY=35 KSI MIN.)			156 in	104.51	104.51
							TOTAL WT. #	134.97	

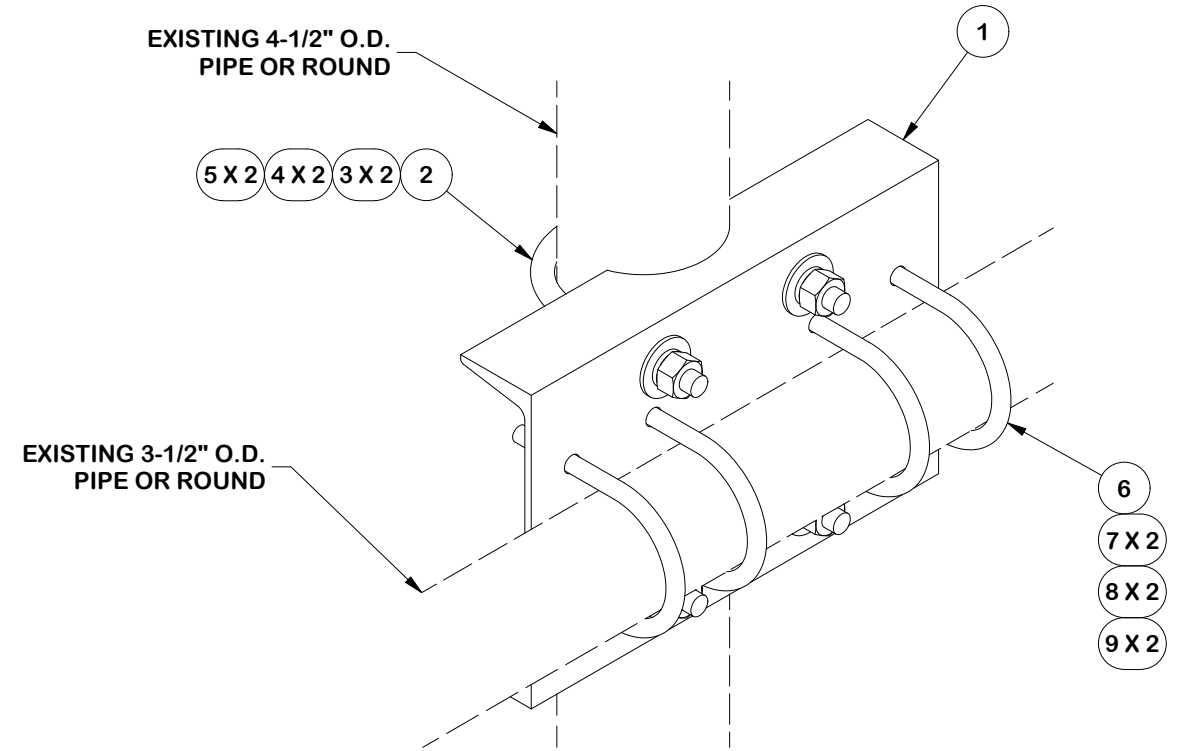


FINISH:  
HOT DIP GALVANIZED.

					<b>TOLERANCE NOTES</b> TOLERANCES ON DIMENSIONS, UNLESS OTHERWISE NOTED ARE: SAWED, SHEARED AND GAS CUT EDGES ( $\pm 0.030"$ ) DRILLED AND GAS CUT HOLES ( $\pm 0.030"$ ) - NO CONING OF HOLES LASER CUT EDGES AND HOLES ( $\pm 0.010"$ ) - NO CONING OF HOLES BENDS AND ANGLES ARE $\pm 1/2$ DEGREE ALL OTHER MACHINING ( $\pm 0.030"$ ) ALL OTHER ASSEMBLY ( $\pm 0.060"$ )			DESCRIPTION <p style="text-align: center;"><b>CELLULAR PIPE FRAME</b></p>			 <p style="text-align: right;">Engineering Support Team: sp1engineering@valmont.com</p>					
					PATENT INFORMATION: WWW.SITEPRO1.COM/PATENTS			CPD NO. <b>SP1</b>		DRAWN BY <b>KC8 8/7/2012</b>		ENG. APPROVAL <b>12/8/2025</b>		PART NO. <b>SP216-12-NS</b>		PAGE 1 OF 2
<b>REVISION HISTORY</b>					PROPRIETARY NOTE: THE DATA AND TECHNIQUES CONTAINED IN THIS DRAWING ARE PROPRIETARY INFORMATION OF VALMONT INDUSTRIES AND CONSIDERED A TRADE SECRET. ANY USE OR DISCLOSURE WITHOUT THE CONSENT OF VALMONT INDUSTRIES IS STRICTLY PROHIBITED.			CLASS SUB <b>87 02</b>		DRAWING USAGE <b>CUSTOMER</b>		CHECKED BY <b>CSL 12/8/2025</b>		DWG. NO. <b>SP216-12-NS</b>		



PARTS LIST						
ITEM	QTY	PART NO.	PART DESCRIPTION	LENGTH	UNIT WT.	NET WT.
1	1	X-SP216	LARGE SUPPORT CROSS PLATE		22.08	22.08
2	2	X-UB5458	5/8" X 4-5/8" X 7" X 3" U-BOLT	7 in	1.63	3.25
3	4	G58FW	5/8" HDG USS FLATWASHER	1/8 in	0.07	0.28
4	4	G58LW	5/8" HDG LOCKWASHER		0.03	0.10
5	4	G58NUT	5/8" HDG HEAVY 2H HEX NUT		0.13	0.52
6	4	X-UB1358	1/2" X 3-5/8" X 5-1/2" X 3" U-BOLT	5 1/2 in	0.82	3.27
7	8	G12FW	1/2" HDG USS FLATWASHER	3/32 in	0.03	0.27
8	8	G12LW	1/2" HDG LOCKWASHER	1/8 in	0.01	0.11
9	8	G12NUT	1/2" HDG HEAVY 2H HEX NUT	7/8 in	0.07	0.57
TOTAL WT. #						30.46



**TOLERANCE NOTES**

TOLERANCES ON DIMENSIONS, UNLESS OTHERWISE NOTED ARE:  
 SAWED, SHEARED AND GAS CUT EDGES ( $\pm 0.030"$ )  
 DRILLED AND GAS CUT HOLES ( $\pm 0.030"$ ) - NO CONING OF HOLES  
 LASER CUT EDGES AND HOLES ( $\pm 0.010"$ ) - NO CONING OF HOLES  
 BENDS AND ANGLES ARE  $\pm 1/2$  DEGREE  
 ALL OTHER MACHINING ( $\pm 0.030"$ )  
 ALL OTHER ASSEMBLY ( $\pm 0.060"$ )

PATENT INFORMATION: WWW.SITEPRO1.COM/PATENTS

PROPRIETARY NOTE:  
 THE DATA AND TECHNIQUES CONTAINED IN THIS DRAWING ARE PROPRIETARY INFORMATION OF VALMONT INDUSTRIES AND CONSIDERED A TRADE SECRET. ANY USE OR DISCLOSURE WITHOUT THE CONSENT OF VALMONT INDUSTRIES IS STRICTLY PROHIBITED.

DESCRIPTION  
**CELLULAR PIPE FRAME**

**SITE PRO 1**  
 Engineering Support Team:  
 sp1engineering@valmont.com  
 A valmont COMPANY

REV	DESCRIPTION OF REVISIONS	CPD	BY	DATE
A	REDRAWN IN INV, UPDATED VIEWS & TABLE		KC8	8/17/2012

CPD NO.	DRAWN BY	ENG. APPROVAL
SP1	KC8 8/7/2012	12/8/2025
CLASS	DRAWING USAGE	CHECKED BY
87	CUSTOMER	CSL 12/8/2025

PART NO.	SP216
DWG. NO.	SP216-12-NS